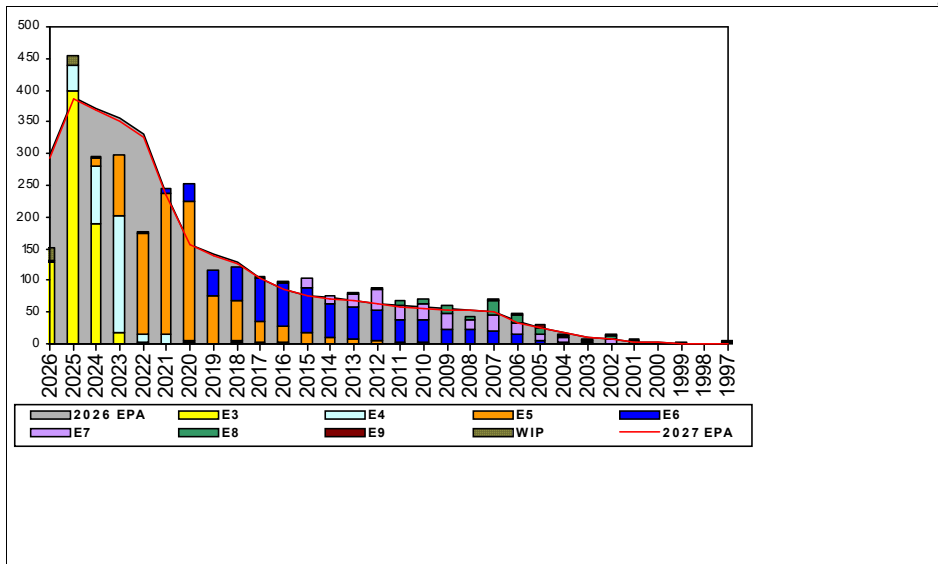


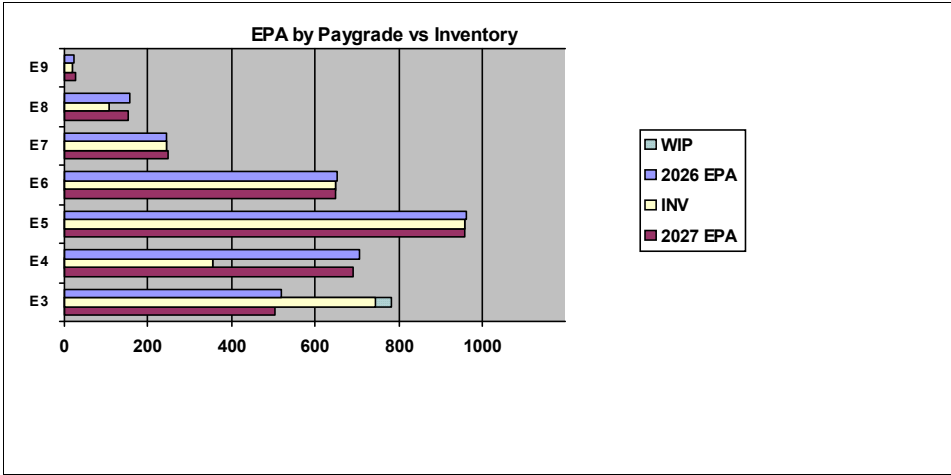
Sonar Technician, Surface - B340



Sea Shore Flow		
TOUR	SEA	SHORE
1ST	50	36
2ND	60	36
3RD	48	36
4TH	48	36
5TH	36	36
6TH	36	36
7TH	36	36

FORCE STRUCTURE MANNING TO BA										
PG	SEA	INV	BA	SHORE	INV	BA	SEA + SHORE	TOTAL INV	TOTAL BA	
E1-3	115.8%	367	317	#Div/0!	64		136.0%	431	317	
E4	49.3%	262	531	39.0%	30	77	48.0%	292	608	
E5	109.5%	602	550	84.6%	285	337	100.0%	887	887	
E6	114.8%	310	270	94.1%	285	303	103.8%	595	573	
E7	164.8%	89	54	78.6%	136	173	99.1%	225	227	
E8	67.1%	55	82	77.3%	51	66	71.6%	106	148	
E9	80.0%	8	10	92.3%	12	13	87.0%	20	23	
Total	93.3%	1693	1814	89.1%	863	969	91.8%	2556	2783	

TIS to PG Years	Pay Grade		E1-E3	E4	E5	E6	E7	E8	E9
			ALL Navy	TIS	2.2	4.0	8.7	13.8	17.8
TIG to PG Years	STG	TIS	1.9	3.9	8.0	13.2	16.4	21.2	
	ALL Navy	TIG	1.3	1.8	4.6	5.7	5.0	4.6	
	STG	TIG	1.1	2.1	4.4	5.7	4.1	5.8	



Zone Info	ZONE A	ZONE B	ZONE C	ZONE D	ZONE E	ALL ZONES
FY26 Manning:	87.0%	89.0%	120.0%	118.0%	99.0%	94.0%
FYTD RENL Rate:	49.6%	49.5%	84.6%	100.0%	34.4%	59.4%

NOTES

Conversions: Submittal are 13-18 Months from PRD.
 Retirements: Should match SEAOS/PRD or extraordinary circumstances.
 SEM/BBA: These programs are advancement opportunities program not an advancement guarantee, apply early and often to stay competitive.
 ECM/TECAD: ETCM Parsons, Seth A. "Casper"

	E1-3	E4	E5	E6	E7	E8	E9	TOTAL
% INV to FY26 EPA	143%	50%	100%	100%	100%	69%	87%	94%
EPA (FY26)	519	706	959	650	245	156	23	3258
INVENTORY	743	355	956	647	244	108	20	3073
EPA (FY27)	503	689	956	647	246	154	25	3220
% INV to FY27 EPA	148%	52%	100%	100%	99%	70%	80%	95%
INV + WIP / FY26 EPA	150%							95%
INVENTORY	781	38 ← E-3 and Below WIP						3111
INV + WIP / FY26 EPA	155%							97%